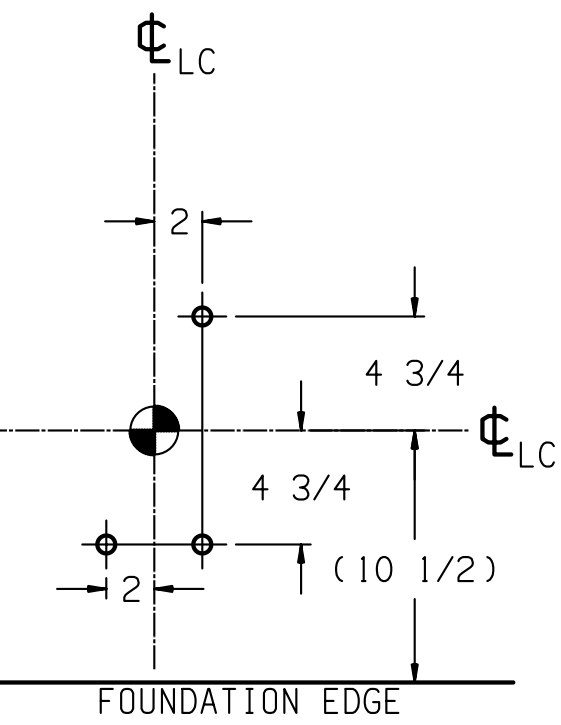
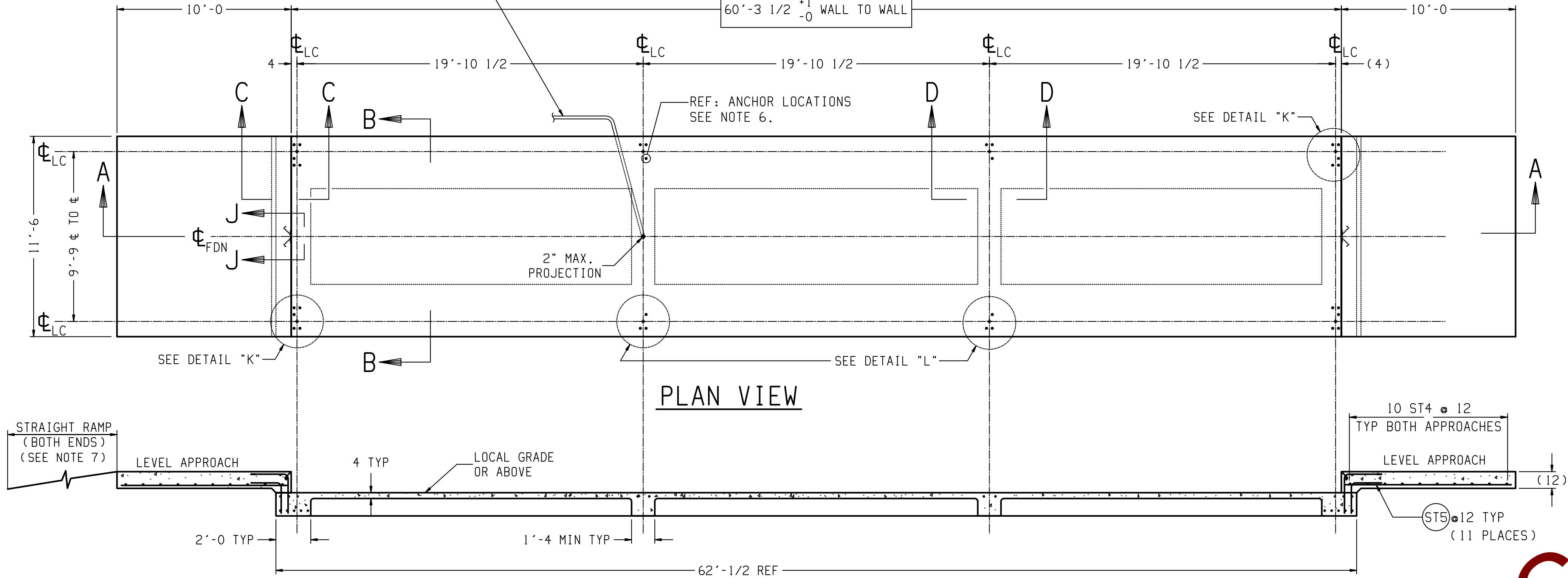
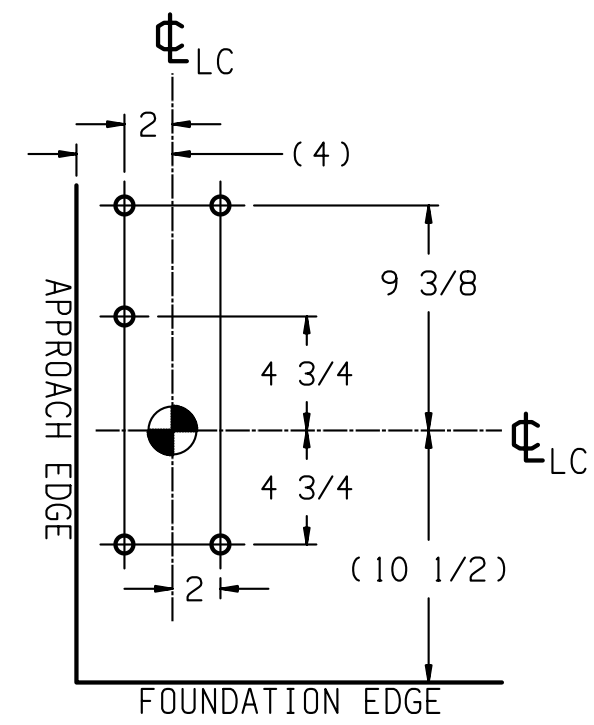


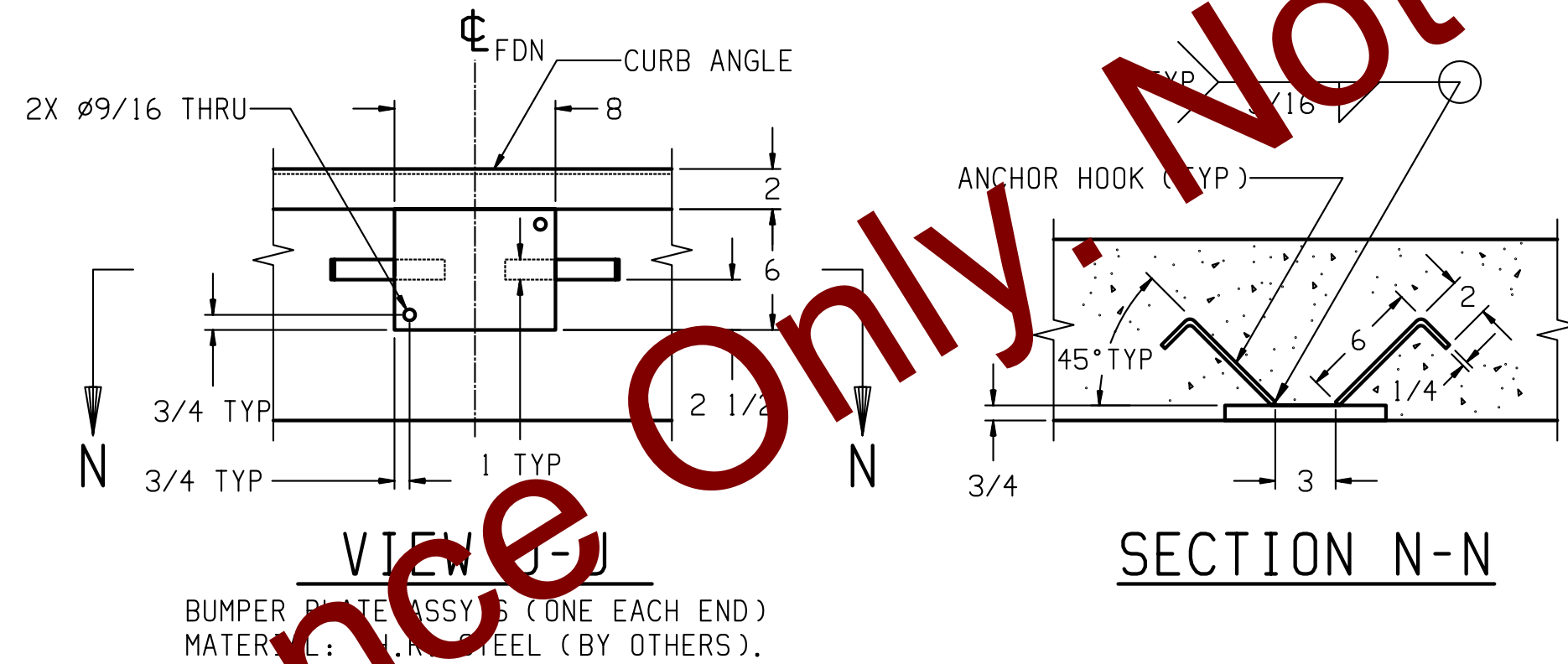
1 1/2" DIA CONDUIT <STEEL PREFERRED> FOR INSTRUMENT CABLE.  
SEE CONDUIT NOTE 8



DETAIL "L"  
ANCHOR LOCATIONS  
(OTHER SIDE IS OPPOSITE)



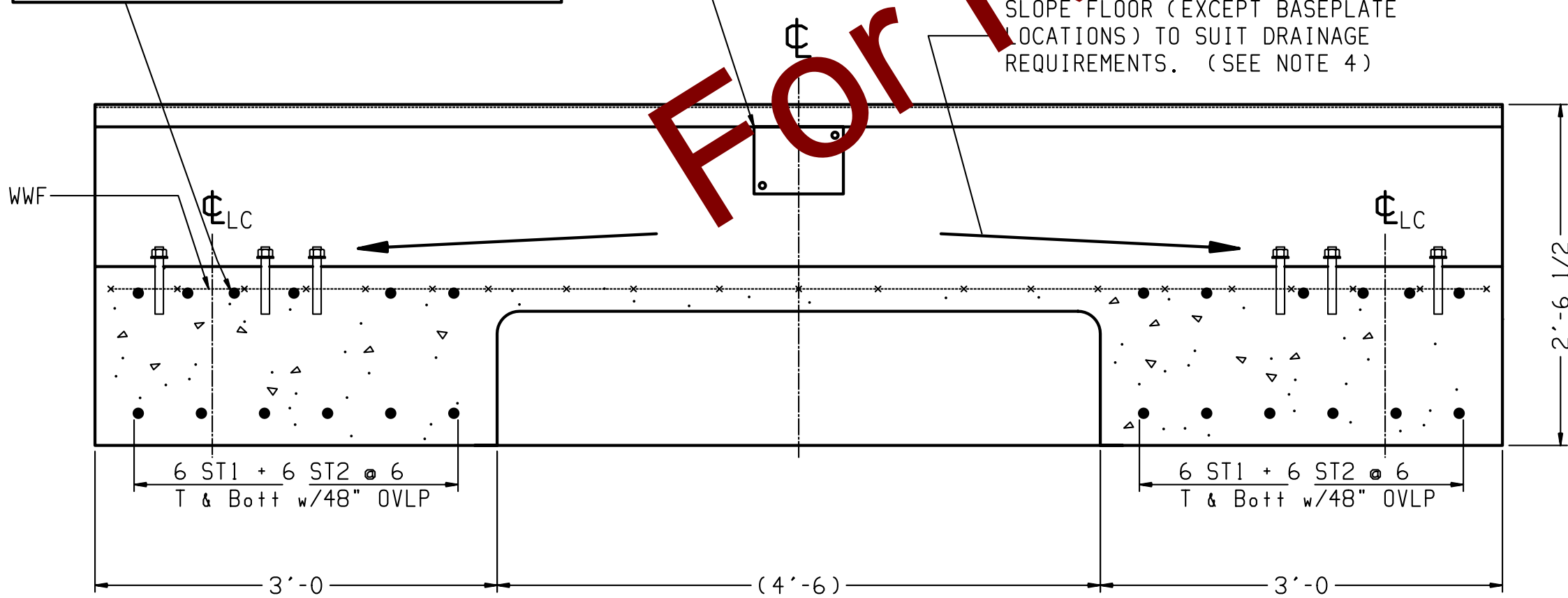
DETAIL "K"  
ANCHOR LOCATIONS  
(OTHER SIDE IS OPPOSITE)



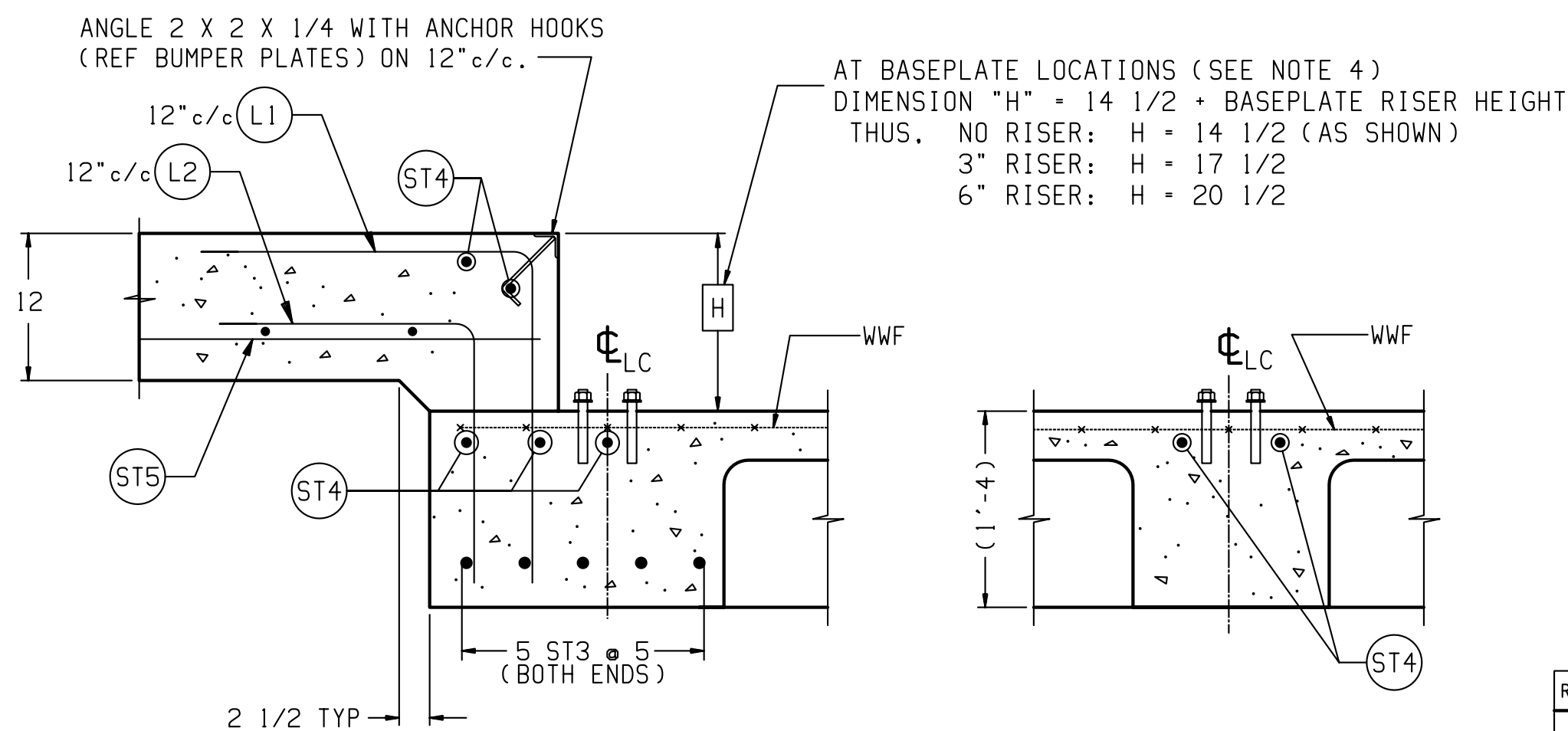
VIEW J-J

SECTION N-N

SPACE REBAR TO AVOID BASEPLATE ANCHORS  
(SHOWN FOR REFERENCE, SUPPLIED BY  
METTLER TOLEDO.)  
TYPICAL ALL BASEPLATE LOCATIONS.



SECTION B-B



SECTION C-C

SECTION D-D

### NOTES:

- 1) USE MINIMUM 3000 PSI STRENGTH CONCRETE AT 28 DAYS WITH 5-7% AIR ENTRAINMENT.
- 2) USE MINIMUM 60KSI YIELD DEFORMED REINFORCING STEEL. REBAR MINIMUM DEPTH OF COVER SHOULD BE IN ACCORDANCE WITH THE LATEST ACI BUILDING CODE REQUIREMENTS FOR STRUCTURAL CONCRETE (ACI 318-SECTION 7.7). UNLESS OTHERWISE SPECIFIED.
- 3) FOUNDATION REQUIRES 1500 PSF RATED SOIL.
- 4) TOP OF CONCRETE AT BASEPLATE LOCATIONS TO BE LEVEL AND IN ONE PLANE  $\pm 1/8"$ .
- 5) DIAGONAL MEASUREMENTS ENDWALL TO ENDWALL MUST BE EQUAL WITHIN  $1/2"$ .
- 6) BASEPLATES ANCHORS TO BE SUPPLIED BY METTLER TOLEDO. USE BASEPLATES AS TEMPLATES TO LOCATE ANCHORS DURING SCALE INSTALLATION.
- 7) RAMP LENGTH: -PER LOCAL REGULATIONS  
-1/2" SLOPE PER FOOT TYPICAL
- 8) CONDUIT LOCATIONS MAY VARY BASED ON APPLICATION, AS LONG AS IT DOES NOT INTERFERE WITH BASE PLATE OR ANCHOR LOCATIONS. ON ABOVE GROUND INSTALLATIONS, THE CONDUIT MAY BE RUN ALONG THE SIDE OF THE FOUNDATION. PLEASE CHECK FOR LOCAL CODE REQUIREMENTS REGARDING CONDUIT PLACEMENT.
- 9) CONTRACTOR SUPPLIES:
  - EXCAVATION
  - REINFORCING STEEL
  - CURB ANGLE ASSEMBLIES (SEE C-C)

- CONCRETE AND FORMS
- 1 1/2" DIA CONDUIT
- BUMPER PLATE ASSEMBLIES (VIEWS J-J & N-N)

DRAWING IS TO SCALE ONLY WHEN BORDER MEASURES 22-7/8" X 35" (FULL SIZE)

REV	CHANGE	BY	DATE	SCALE	.02
A	ADDED 756I REFERENCE TO DRAWING TITLE		DATE 12/19/97		
B	ADDED REBAR NOTE: ST7, L1 & L2 QTY WERE 24	HBW	06/13/00	DRN ELB APPD	
B	UPDATE NOTES & DETAILS, ADD FDN CENTERLINE				
C	REMOVE 756I REFERENCE IN DRAWING TITLE	MDP	06/17/03		
C	ADDED VTS231, PDX DETAILS, AND CONDUIT NOTE	KRS	06/15/10		
TITLE VTS231/7562C FOUNDATION: BEAM SLAB 60' X 11', WITH 20' MODULES WITH RISER OPTIONS					
UNLESS OTHERWISE SPECIFIED, ALL DIMENSIONS ARE IN INCHES, AND DIMENSIONAL TOLERANCES ARE:					
FRACTIONAL DECIMAL ANGULAR					
1/32 .XX .02 .5"					
THIS PRINT IS FURNISHED WITH THE UNDERSTANDING THAT THE ESSENCE THEREOF WILL NOT BE REPRODUCED IN WHOLE OR IN PART WITHOUT WRITTEN AUTHORIZATION OF METTLER-TOLEDO, INC. ALL DESIGNS ARE THE PROPERTY OF METTLER-TOLEDO, INC. AND WILL BE PROTECTED BY PATENTS.					
TC203508					REV C